

ORIGINAL SURVEY NOTE BOOK NO.	BY Merry & Raymond	DATE 3-65
REVIEWED PLOTTED AREAS	DATE 3-65	DATE 3-65

FINAL SURVEY NOTE BOOK NO.	BY Merry & Raymond	DATE 3-65
REVIEWED PLOTTED AREAS	DATE 3-65	DATE 3-65

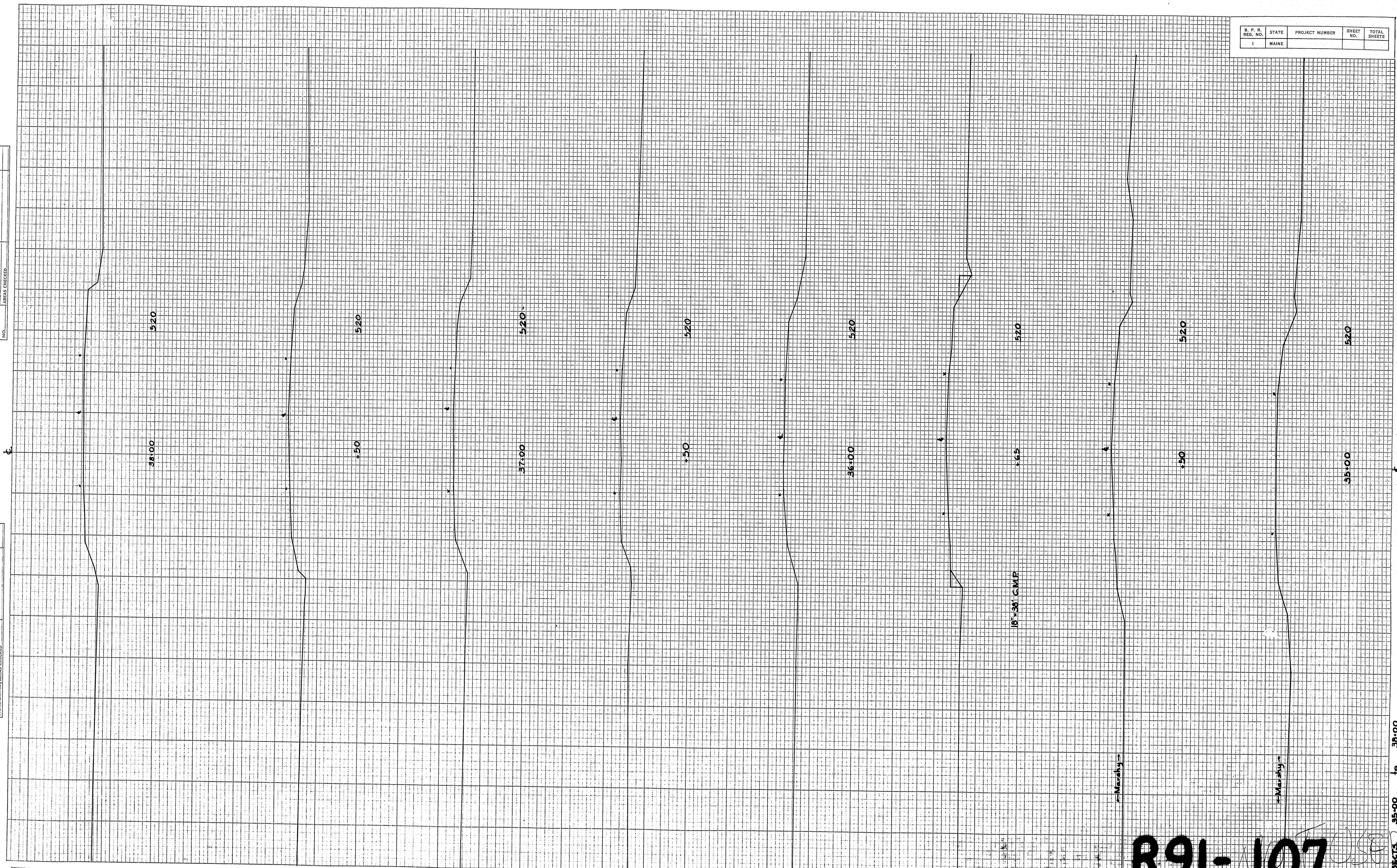


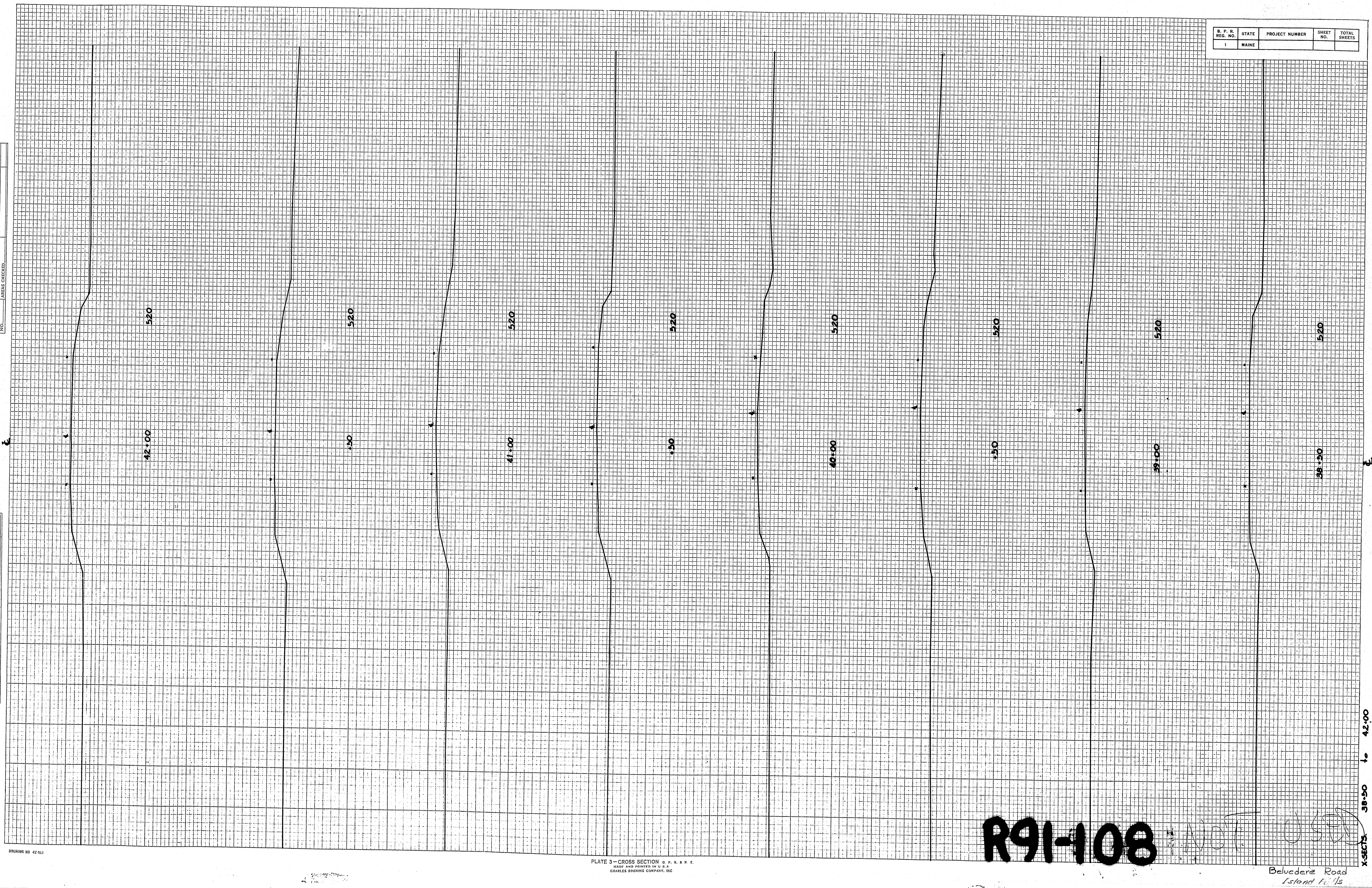
PLATE 3 - CROSS SECTION U. S. P. R. E.
MADE AND PRINTED IN U. S. A.
CHARLES BURNING COMPANY, INC.

R91-107

X-35475 35+00 to 38+00

ORIGINAL SURVEY NOTE BOOK NO.	BY Wesley E. Raymond DATE 3-68
--	---

FINAL SURVEY NO.	SURVEYED PLOTTER DATE AREAS CHECKED	BY DATE
------------------------	---	------------



D. P. R. REF. NO.	STATE	PROJECT NUMBER	SHEET NO.	TOTAL SHEETS
1	MAINE			

R91-108

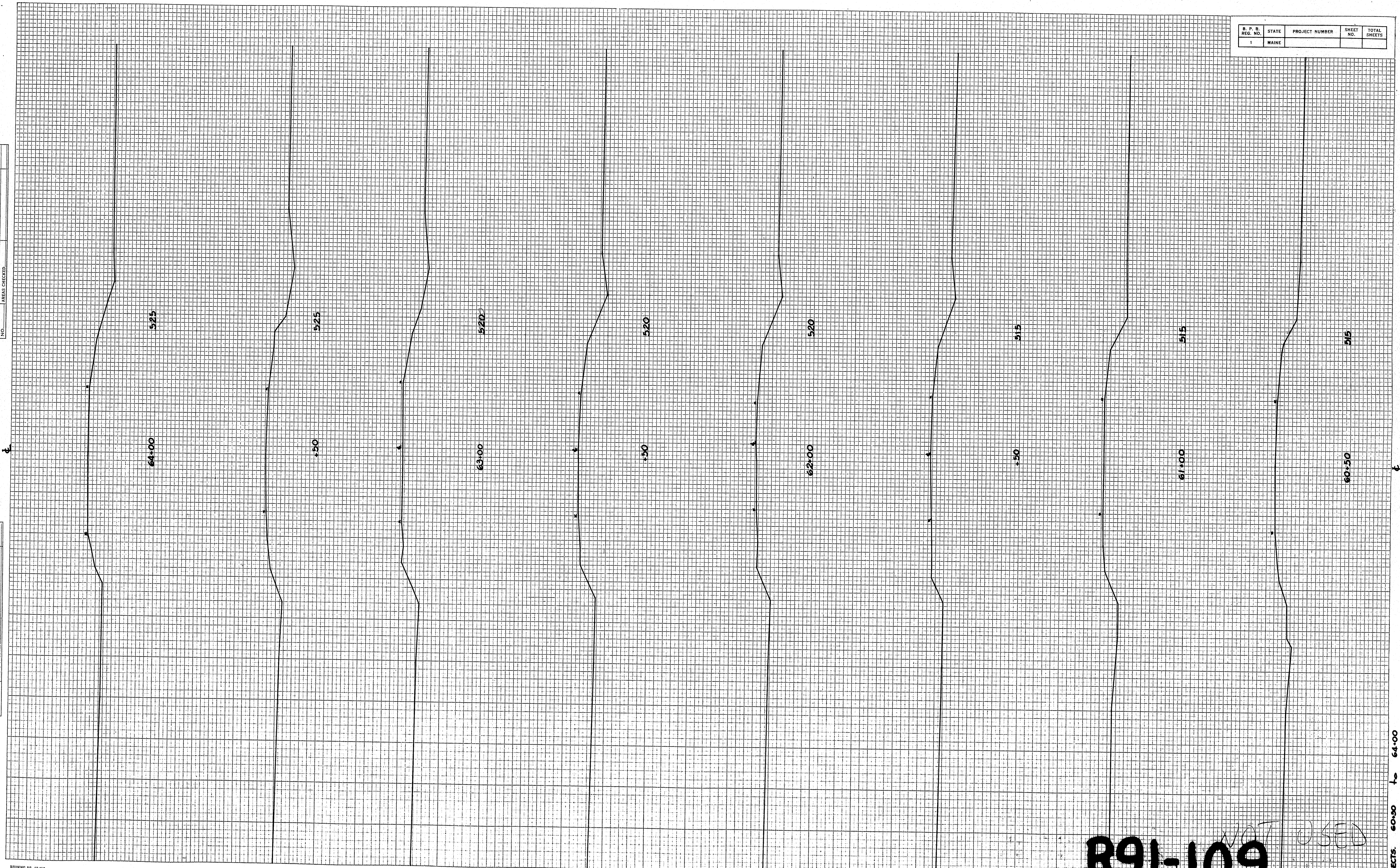
NOT USED

Belvedere Road
Island 10/15

PLATE 3 - CROSS SECTION D. P. R. & E.
MADE AND PRINTED IN U.S.A.
CHARLES BRIDGES COMPANY, INC.

ORIGINAL SURVEY NOTE BOOK NO.	SURVEYED AREAS CHECKED	BY Mary E. Raymond	DATE 3-65

FINAL SURVEY NOTE BOOK NO.	SURVEYED PLOTED AREAS CHECKED	BY	DATE



B. P. D.	STATE	PROJECT NUMBER	SHEET NO.	TOTAL SHEETS
1	MAINE			

PLATE 3 - CROSS SECTION B. P. D. S. R. E.
MADE AND PRINTED IN U. S. A.
CHARLES BRIDGES COMPANY, INC.

R91-109

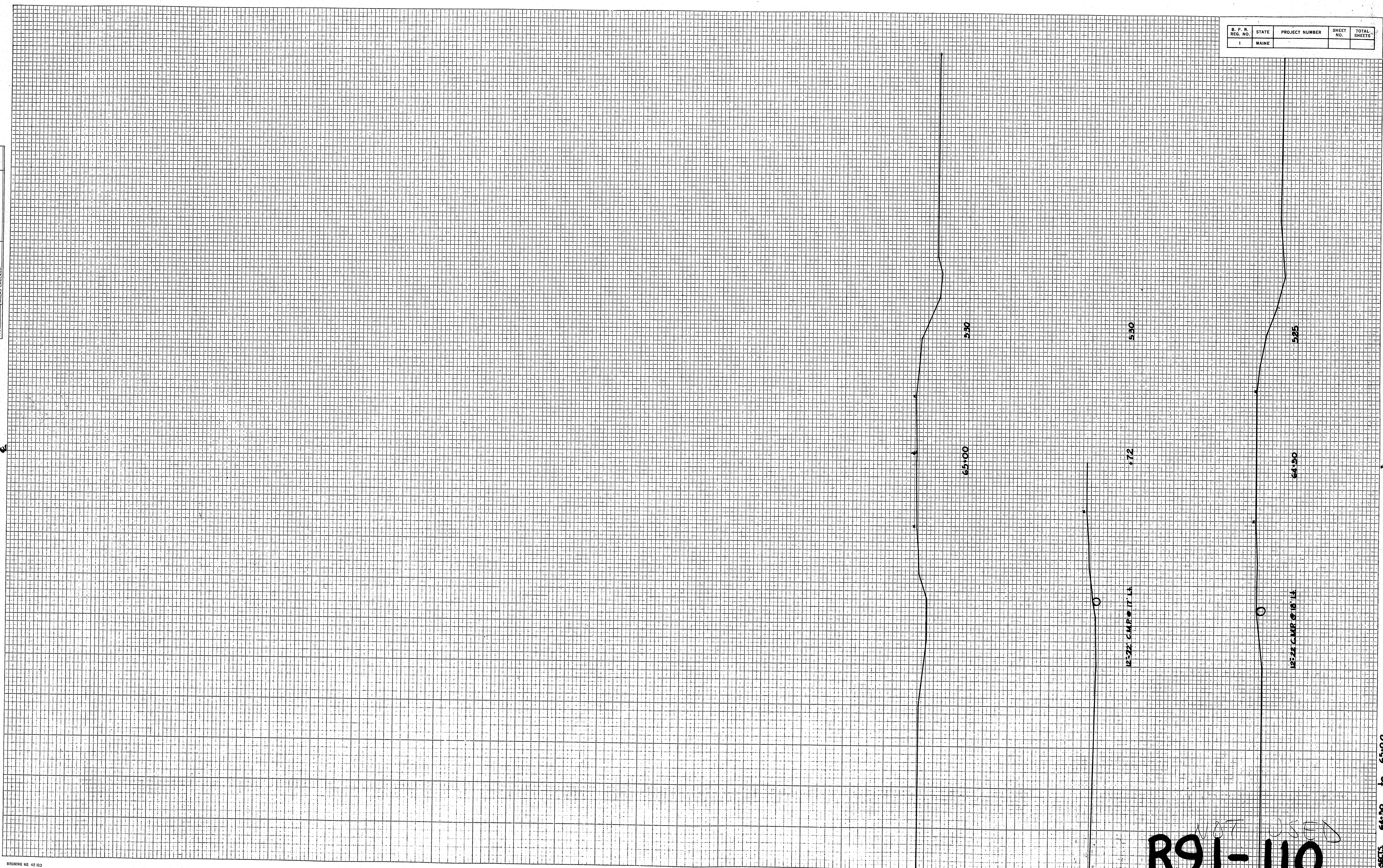
Belvedere Road
Island Falls

X-SECTS. 60+50 to 64+00

ORIGINAL SURVEY	DATE
NO. 1	3-65
BY	
Mary E. Ryan	
NO. 2	
NO. 3	
NO. 4	
NO. 5	
NO. 6	
NO. 7	
NO. 8	
NO. 9	
NO. 10	
NO. 11	
NO. 12	
NO. 13	
NO. 14	
NO. 15	
NO. 16	
NO. 17	
NO. 18	
NO. 19	
NO. 20	
NO. 21	
NO. 22	
NO. 23	
NO. 24	
NO. 25	
NO. 26	
NO. 27	
NO. 28	
NO. 29	
NO. 30	
NO. 31	
NO. 32	
NO. 33	
NO. 34	
NO. 35	
NO. 36	
NO. 37	
NO. 38	
NO. 39	
NO. 40	
NO. 41	
NO. 42	
NO. 43	
NO. 44	
NO. 45	
NO. 46	
NO. 47	
NO. 48	
NO. 49	
NO. 50	
NO. 51	
NO. 52	
NO. 53	
NO. 54	
NO. 55	
NO. 56	
NO. 57	
NO. 58	
NO. 59	
NO. 60	
NO. 61	
NO. 62	
NO. 63	
NO. 64	
NO. 65	
NO. 66	
NO. 67	
NO. 68	
NO. 69	
NO. 70	
NO. 71	
NO. 72	
NO. 73	
NO. 74	
NO. 75	
NO. 76	
NO. 77	
NO. 78	
NO. 79	
NO. 80	
NO. 81	
NO. 82	
NO. 83	
NO. 84	
NO. 85	
NO. 86	
NO. 87	
NO. 88	
NO. 89	
NO. 90	
NO. 91	
NO. 92	
NO. 93	
NO. 94	
NO. 95	
NO. 96	
NO. 97	
NO. 98	
NO. 99	
NO. 100	

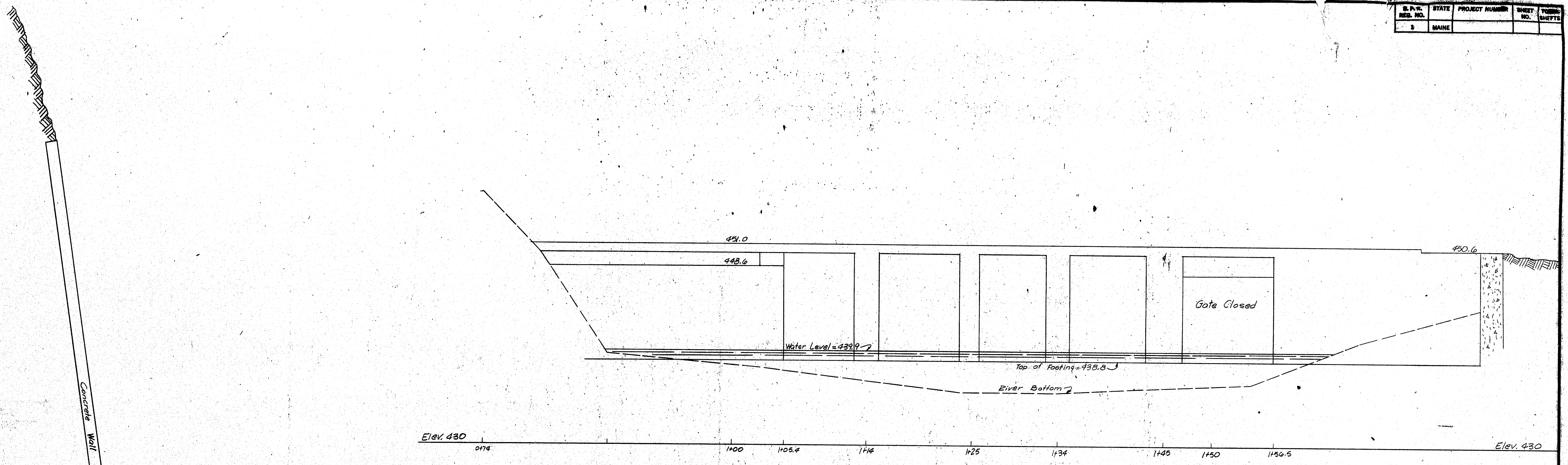
FINAL SURVEY	DATE
NO. 1	
NO. 2	
NO. 3	
NO. 4	
NO. 5	
NO. 6	
NO. 7	
NO. 8	
NO. 9	
NO. 10	
NO. 11	
NO. 12	
NO. 13	
NO. 14	
NO. 15	
NO. 16	
NO. 17	
NO. 18	
NO. 19	
NO. 20	
NO. 21	
NO. 22	
NO. 23	
NO. 24	
NO. 25	
NO. 26	
NO. 27	
NO. 28	
NO. 29	
NO. 30	
NO. 31	
NO. 32	
NO. 33	
NO. 34	
NO. 35	
NO. 36	
NO. 37	
NO. 38	
NO. 39	
NO. 40	
NO. 41	
NO. 42	
NO. 43	
NO. 44	
NO. 45	
NO. 46	
NO. 47	
NO. 48	
NO. 49	
NO. 50	
NO. 51	
NO. 52	
NO. 53	
NO. 54	
NO. 55	
NO. 56	
NO. 57	
NO. 58	
NO. 59	
NO. 60	
NO. 61	
NO. 62	
NO. 63	
NO. 64	
NO. 65	
NO. 66	
NO. 67	
NO. 68	
NO. 69	
NO. 70	
NO. 71	
NO. 72	
NO. 73	
NO. 74	
NO. 75	
NO. 76	
NO. 77	
NO. 78	
NO. 79	
NO. 80	
NO. 81	
NO. 82	
NO. 83	
NO. 84	
NO. 85	
NO. 86	
NO. 87	
NO. 88	
NO. 89	
NO. 90	
NO. 91	
NO. 92	
NO. 93	
NO. 94	
NO. 95	
NO. 96	
NO. 97	
NO. 98	
NO. 99	
NO. 100	

B. F. R.	STATE	PROJECT NUMBER	SHEET NO.	TOTAL SHEETS
1	MAINE			

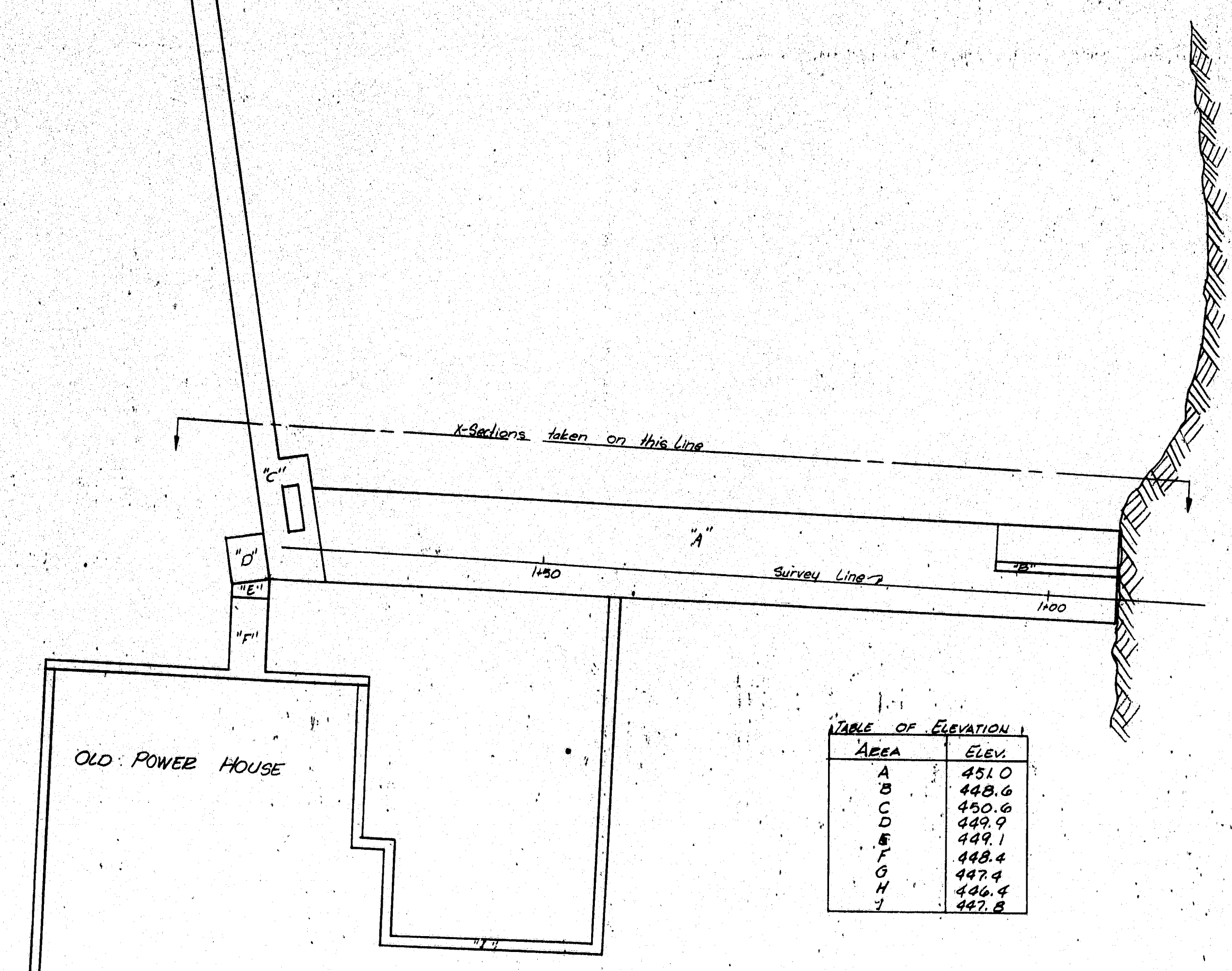


NOT USED
R91-110
Belvedere Road
1/10/77 P. 1/15

S. P. E.	STATE	PROJECT NUMBER	SHEET NO.	TOTAL SHEETS
1	MAINE			



CROSS SECTION & ELEVATION
SCALE = 1" = 5'



Area	Elev.
A	451.0
B	448.6
C	450.6
D	449.9
E	449.1
F	448.4
G	447.9
H	446.4
I	447.8

PLAN VIEW
DAM AT ISLAND FALLS
SCALE = 1" = 10'

HOWARD, NEEDLES, TAMMEN & BERGENDOFF
CONSULTING ENGINEERS
NEW YORK BOSTON KANSAS CITY

MAINE STATE HIGHWAY COMMISSION
AUGUSTA, MAINE

DAM

ISLAND FALLS

R91-III